



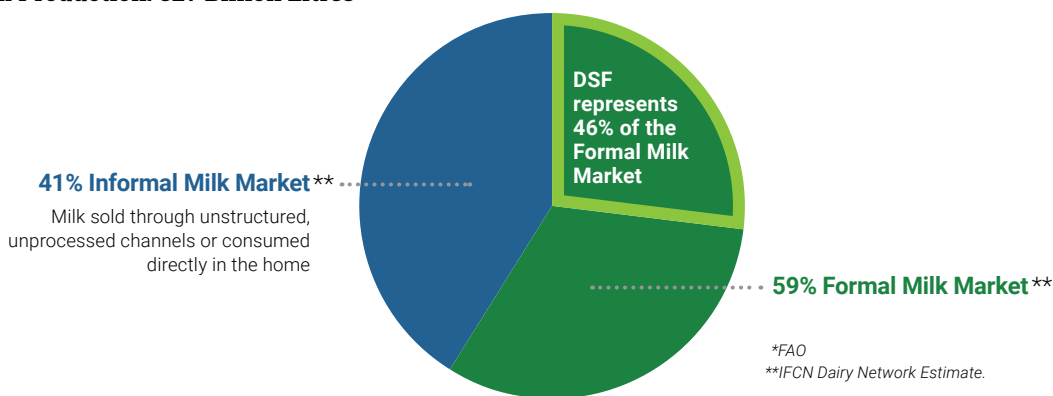
2019 Reporting Results

The Dairy Sustainability Framework (DSF), which aligns, connects and tracks the sustainability progress of approximately 30% of global milk production, is pleased to announce the first reporting results of all 11 criteria covering environmental, economic and social sustainability pillars.

Data included in this report are from 2019 and reported by DSF members in 2020. The process by which the DSF manages and calculates the data is audited by the University of Nottingham in the U.K. Compared to 2018, there have been increases in both prioritization and reporting efforts, along with improved data control and quality.

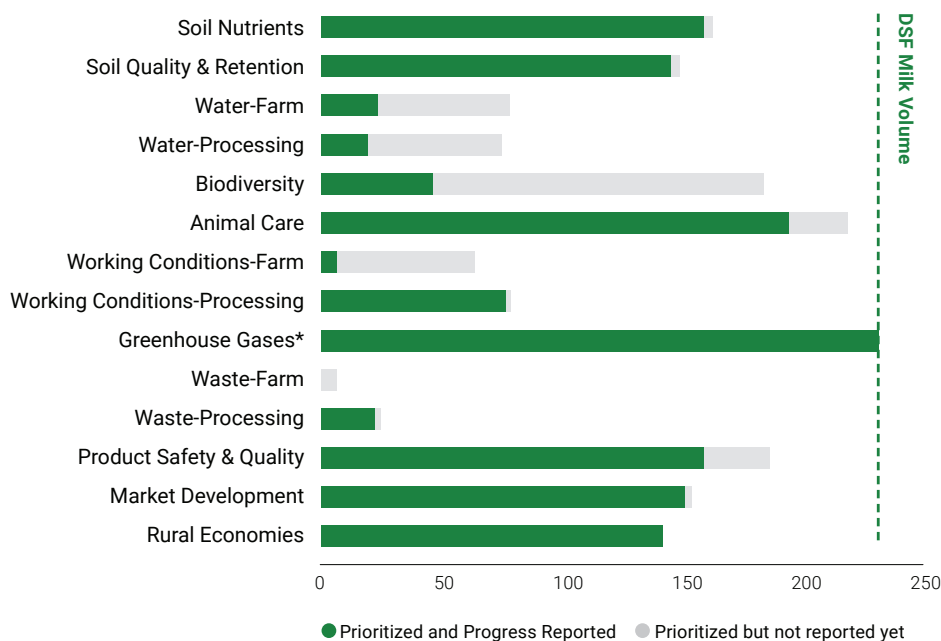
DSF and Global Milk Production

Global Milk Production: 827 Billion Litres*



2019 DSF Milk Volume, Priorities and Reporting

Milk Production in Billion Litres



Key Takeaways

Three indicator metrics introduced in 2019 (Product Safety & Quality, Market Development and Rural Economies) received the highest prioritization in this reporting period. Prioritization overall continues to increase. DSF member reporting continues to grow.

*Reporting for entire dairy sector provided by FAO analysis shown below.

Water, Working Conditions and Waste Criteria have two indicator metrics as they cover both farm and processing levels.

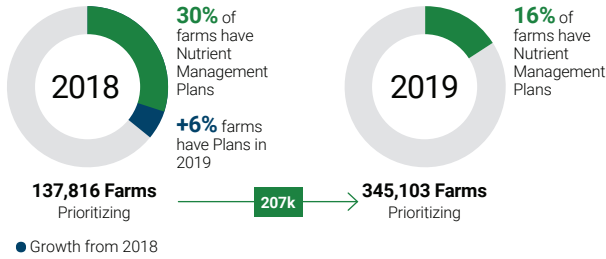
Action on Priorities

Compared to 2018, 2019 reporting shows considerable growth in members who are addressing priority criteria and implementing strategies and processes to measure their progress.

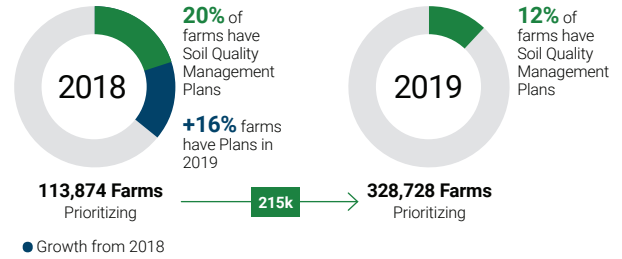
Key

- Members report the number of farms they represent
- Assumption: 1 plan per farm

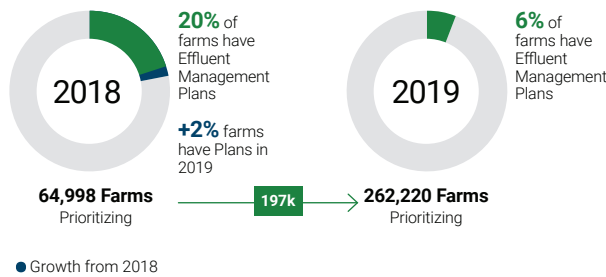
Soil Nutrients



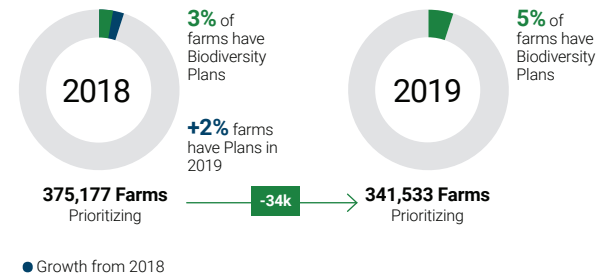
Soil Quality & Retention



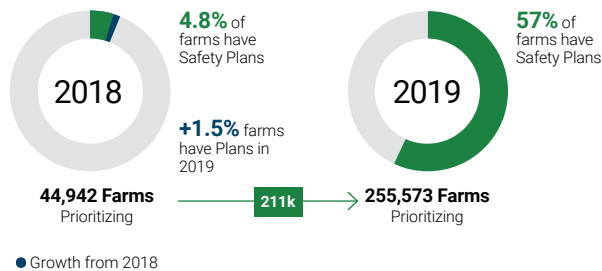
Water Availability & Quantity-Farm



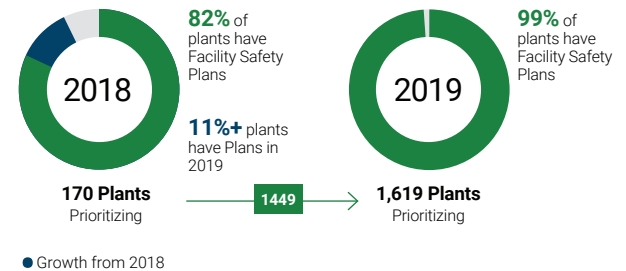
Biodiversity



Working Conditions-Farm



Working Conditions-Processing



Baselines Being Set in 2019

Waste-Farm
210,604 Farms Prioritized
0% Report having Waste Management Plans

Waste-Processing
45,181 tonnes to landfill

Product Safety & Quality
16 Members Prioritized
81% Report having Product Safety & Quality Recall Plans
37 public product recalls

Market Development
313,641 Farms Prioritized
78% Report having a process to inform Producers of Market Opportunities

Rural Economies
\$59.28 billion in payments for raw milk by DSF members

Reduction on These Criteria Demonstrates Progress

Animal Care
Average weighted annual Somatic Cell Count:
2018: 210,000 | 2019: 183,539
-8.7% (vs -2.9% in 2018)

Water Processing
Water use efficiency for processing (litres of water to produce 1kg of product):
5.5 litres per kg of product produced
+21.6% (vs -2.2% in 2018; increase due to more members reporting against this criteria)

Greenhouse Gas Emissions
FAO "Climate Change and the Global Dairy Sector" report, 2005-2015: 2.8-2.5 CO₂eq./kg fat and protein corrected milk over 10 years.
-11% (results reported every 5 years)